



8-head SignalMaster™ model



6-head flashing model



4-head flashing model

► Latitude™ | Warning Lighting

FEATURES

- LED flashing warning light and SignalMaster™ models suitable for both interior and exterior applications
- Flashing models available in 4-head, 6-head, or 8-head
- SignalMaster models are available in 6-head or 8-head
- SignalMaster models with flashing ends available in 8-head models
- Three-LEDs per light head
- Innovative co-extrusion, polycarbonate housing provides moisture resistance
- Optimal mounting brackets and shrouds available
- Number of flash patterns vary by model
- SignalMaster models include Federal Signal's economy SignalMaster controller (except for flashing end models)
- Five-year warranty

APPROVALS

- SAE, J845 Class 2 (Blue, Amber)
- SAE, J845, Class 1 (Red)
- SAE J595, Class 1
- California Title 13, Class B

A complement to any warning solution

Latitude™ series offers the flexibility needed to complement any warning solution. Equipped with three-LEDs per position and Federal Signal's Solaris® LED reflectors, Latitude delivers an impressive optical performance for your vehicle. The warning light is available in 4-, 6-, and 8-head flashing models. SignalMaster™ directional warning is available in 6-head and 8-head models.

Warning capabilities

Latitude flashing models are programmed with (10) eye-catching flash patterns plus one test pattern and SignalMaster models are programmed with (3) built-in directional signals (left, right, and center-out) and one warning pattern. Latitude SignalMaster models with flashing ends have (28) 8-head flash patterns, (5) 2-head flash patterns (end modules), and (5) directional patterns per each direction.

A simple concept you can depend on

Built to last, the Latitude is engineered with the exclusive ROC (Reliable On-Board Circuitry™) technology. ROC eliminates failure points found in similar warning products. Available for both interior and exterior applications, this sensible warning light is built with an innovative co-extrusion, polycarbonate housing to provide moisture resistance.

COMPARISON

	Flashing	SignalMaster™	SignalMaster™ with flashing ends
Comparison			
Suitable for internal and external applications	Yes	Yes	Yes
Solaris® reflectors	Yes	Yes	Yes
ROC (Reliable On-Board Circuitry™ technology)	Yes	Yes	Yes
Size of models	4-, 6-, and 8-head	6- and 8-head	8-head
SignalMaster function	No	Yes (6- and 8-head SignalMaster)	Yes (6-head SignalMaster)
Ability to flash	Yes	No	Yes (end modules)
Comes with SignalMaster controller	No	Yes	No
Number of flash patterns	(10) flash patterns	(3) directional patterns (1) warning pattern	(28) eight-head flash patterns (5) two-head flash patterns (end modules) (5) directional patterns per direction (5 left, 5 right, 5 center out)
Warranty	Five-year warranty		

COMPLIANCE

Color	SAE J845		SAE J595	CA Title 13
	Class	Coverage	Class	
Amber	2	45°	1	Class B
Blue	2	40°	1	Class B
Red	1	40°	1	Class B

SPECIFICATIONS

	4-Head	6-Head	8-Head
Specifications			
Voltage	12.8 VDC	12.8 VDC	12.8 VDC
Amp Draw	2 A	3 A	4 A
Operating temp	-22° F to +149° F (-30° C to +65° C)	-22° F to +149° F (-30° C to +60° C)	-22° F to +149° F (-30° C to +60° C)
Physical Specifications			
Height	1.13 in (2.86 cm)	1.13 in (2.86 cm)	1.3 in (2.86 cm)
Width	16.9 in (42.9 cm)	24.2 in (61.5 cm)	31.8 in (80.5 cm)
Depth	2.63 in (6.67 cm)	2.63 in (6.67 cm)	2.63 in (6.67 cm)
Ship Weight			
	3.1 lbs (1.4 kg)	3.8 lbs (1.7 kg)	4.0 lbs (1.8 kg)

4-Head flashing model, 16.9 inch length

SL4F-2R2B	(2) Red LED reflectors, (2) Blue LED reflectors (alternating) R-B-R-B
SL4F-RB	(2) Red LED reflectors, (2) Blue LED reflectors, R-R-B-B
SL4F-R	(4) Red LED reflectors, R-R-R-R
SL4F-B	(4) Blue LED reflectors, B-B-B-B
SL4F-A	(4) Amber LED reflectors, A-A-A-A (does not include directional functions)
SL4F-2R2W	(2) Red LED reflectors, (2) White LED reflectors, R-R-W-W
SL4F-2B2W	(2) Blue LED reflectors, (2) White LED reflectors, B-B-W-W

6-Head flashing model, 24.2 inch length

SL6F-RB	(3) Red LED reflectors, (3) Blue LED reflectors, R-R-R-B-B-B
SL6F-R	(6) Red LED reflectors, R-R-R-R-R-R
SL6F-BR	(3) Blue LED reflectors, (3) Red LED reflectors, B-B-B-R-R-R
SL6F-B	(6) Blue LED reflectors, B-B-B-B-B-B
SL6F-AW	(3) Amber LED reflectors, (3) White LED reflectors, A-A-A-W-W-W
SL6F-A	(6) Amber LED reflectors, A-A-A-A-A-A (does not include directional functions)

8-Head flashing model, 31.8 inch length

SL8F-RB	(4) Red LED reflectors, (4) Blue LED reflectors, R-R-R-R-B-B-B-B
SL8F-R	(8) Red LED reflectors, R-R-R-R-R-R-R-R
SL8F-B	(8) Blue LED reflectors, B-B-B-B-B-B-B-B
SL8F-A	(8) Amber LED reflectors, A-A-A-A-A-A-A-A
SL8F-BR	(4) Blue LED reflectors, (4) Red LED reflectors, B-B-B-B-R-R-R-R
SL8F-4R4B	(4) Red LED reflectors, (4) Blue LED reflectors (alternating) R-B-R-B-R-B-R-B
SL8F-AW	(4) Amber LED reflectors, (4) White LED reflectors, A-A-A-A-W-W-W-W
SL8F-BA	(4) Blue LED reflectors, (4) Amber LED reflectors, B-B-B-B-A-A-A-A

SignalMaster™ models

SL6S-A	(6) Amber LED reflectors, 24.2",
--------	----------------------------------

A-A-A-A-A-A

SL8S-A	(8) Amber LED reflectors, 31.8", A-A-A-A-A-A-A-A
--------	---

SL8S-RB	(4) Red LED reflectors, (4) Blue LED reflectors, 31.8", R-R-R-R-B-B-B-B
---------	---

SL8S-A48	(8) Amber LED reflectors, 48", A-A-A-A-A-A-A-A
----------	---

SignalMaster models with flashing ends (does not include controller)

SL8C-RAB	(1) Red LED reflector, (6) Amber LED reflectors, (1) Blue LED reflector, R-A-A-A-A-A-A-B
----------	--

SL8C-RAR	(1) Red LED reflector, (6) Amber LED reflectors, (1) Red LED reflector, R-A-A-A-A-A-A-R
----------	---

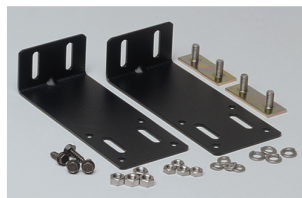
SL8C-BAB	(1) Blue LED reflector, (6) Amber LED reflectors, (1) Blue LED reflector, B-A-A-A-A-A-A-B
----------	---

SL8C-BBB	(8) Blue LED reflectors, B-B-B-B-B-B-B-B
----------	--

Mounting brackets and shrouds for Latitude



320310
Flush mount, vertical surface



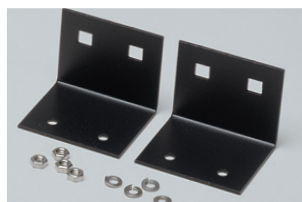
320320
Lightbar or rear deck mount



320330
System mount



320340
Universal mount



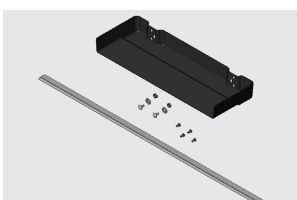
320350
Foot adapter mount



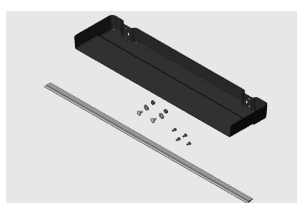
SLB-001
Long L-bracket



SLB-002
Short L-bracket



SLB-4SHRD
4-head shroud



SLB-6SHRD
6-head shroud



SLB-8SHRD
8-head shroud



SLB-FRD15ND
8-head rear headliner bracket, no drill, Ford
F-150 2015-2020 and Super Duty 2015-2020