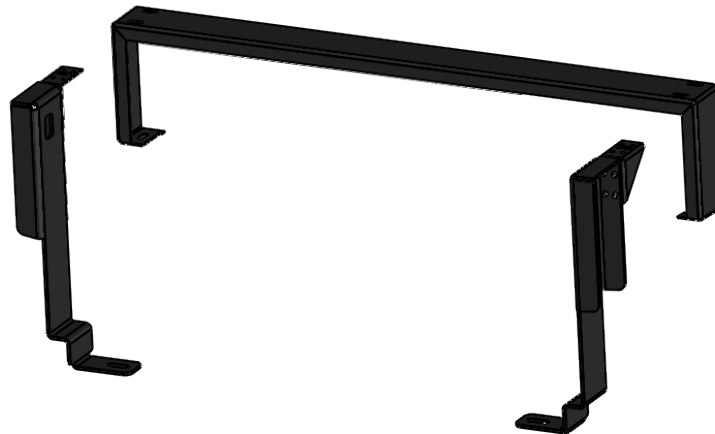
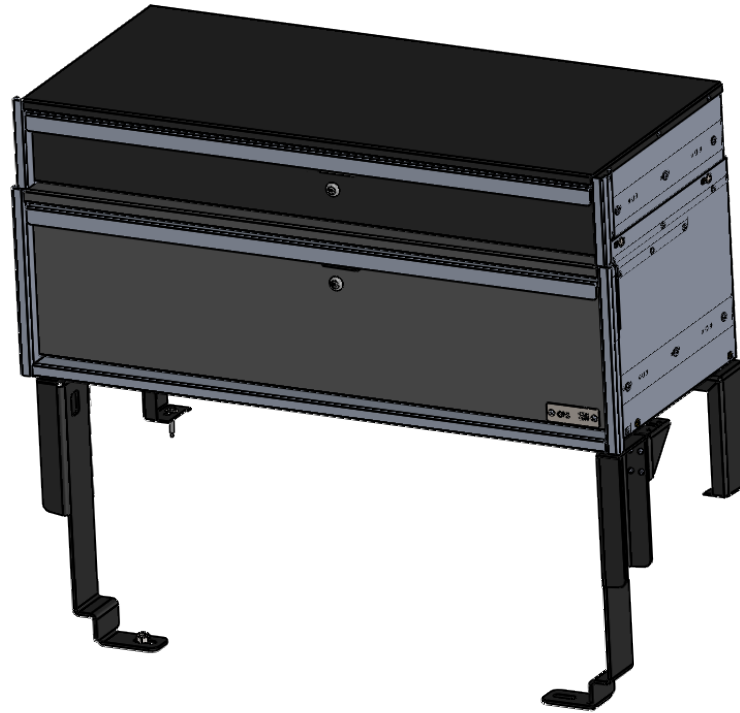
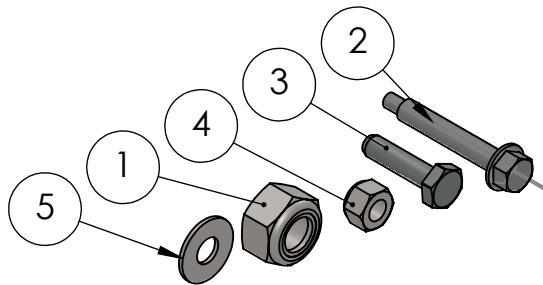


INSTALL INSTRUCTIONS FOR PDU UNIT USING PDU-DDU-8-BRACKETS



HARDWARE:



ITEM NO.	PART NUMBER	DESCRIPTION	QTY.
1	1409445	NUT, M12, NYLOCK, ZINC PLATED	2
2	1409444	SCREW, DRILLING, 1/4"-20 X 1-3/4", HEX HEAD	2
3	1051223	BOLT, HEX HEAD, 1/4"-20, 1" LONG, ZN PLATED, GRADE 5 CAP	1
4	1000094	NUT 1/4-20 NYLOC GRADE 5	4
5	1089578	WASHER - 0.25" (0.3125"ID - 0.75" OD)	10



STEP 1:
REMOVE FACTORY LOAD
FLOOR AND REAR SILL



NOTE: REPLACE NUTS
ON JACK AFTER TRIM
HAS BEEN REMOVED



10mm



STEP 2:
REMOVE PLASTIC PANELS FROM AREA



10mm





FROM REAR



18mm

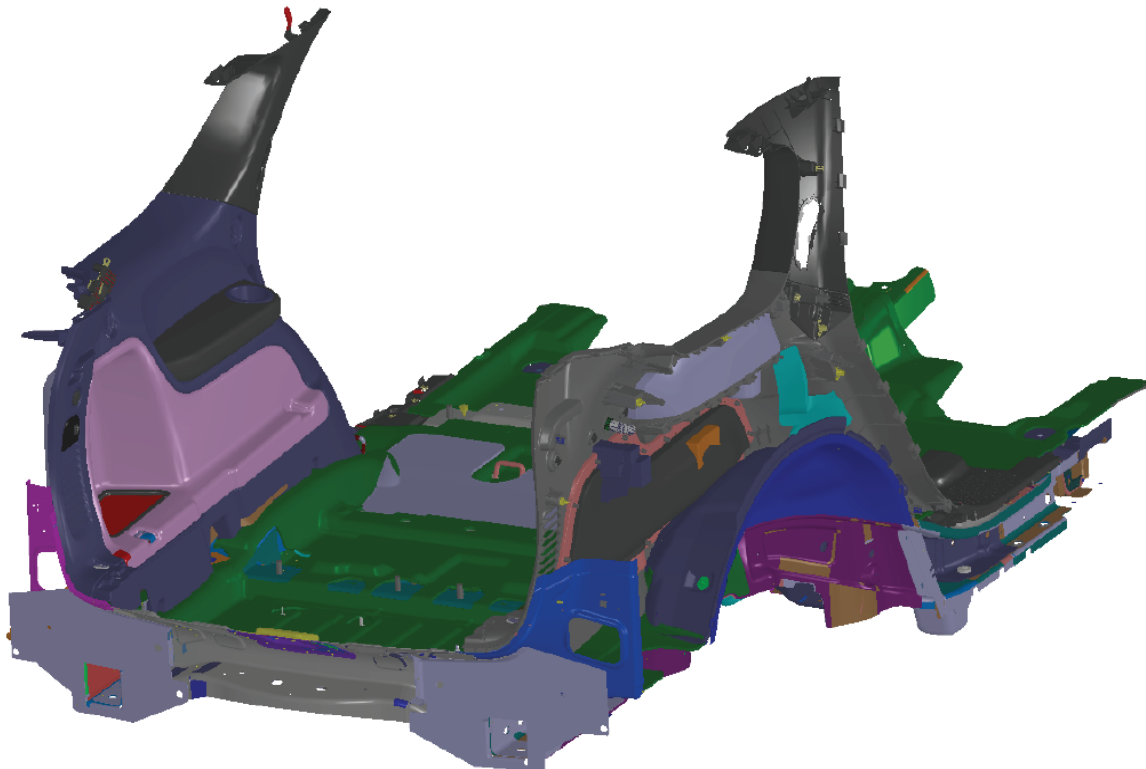


FROM FRONT



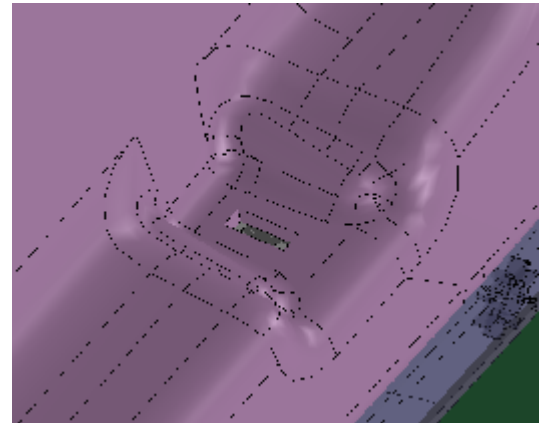
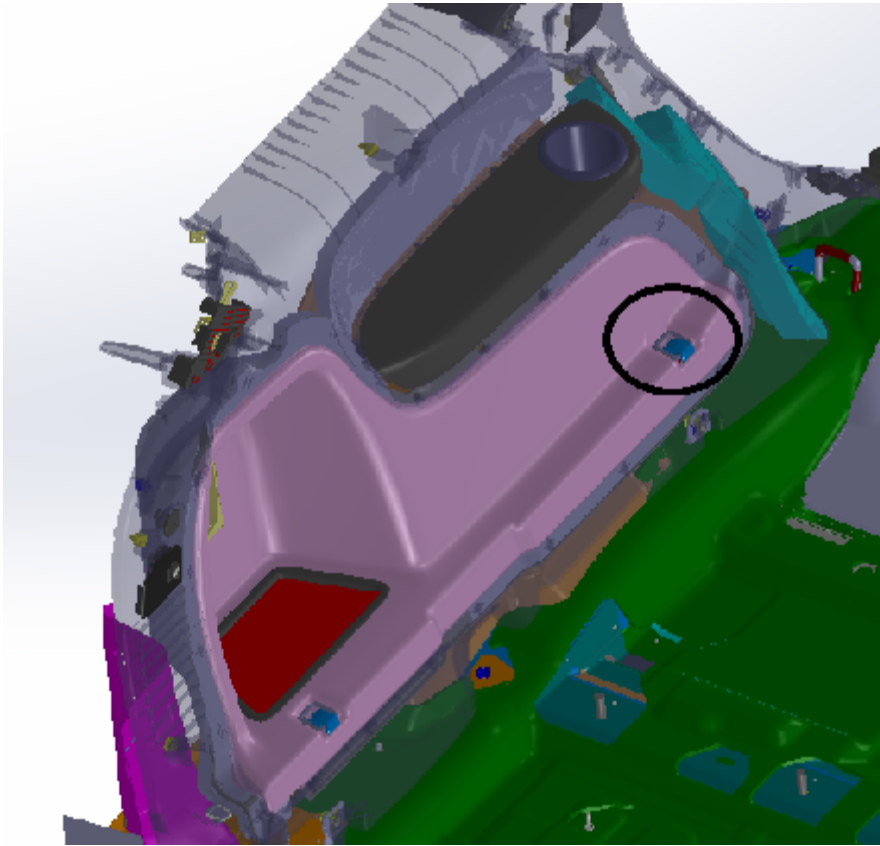
18mm

STEP 3:
REMOVE 3RD ROW
SEAT IF EQUIPED



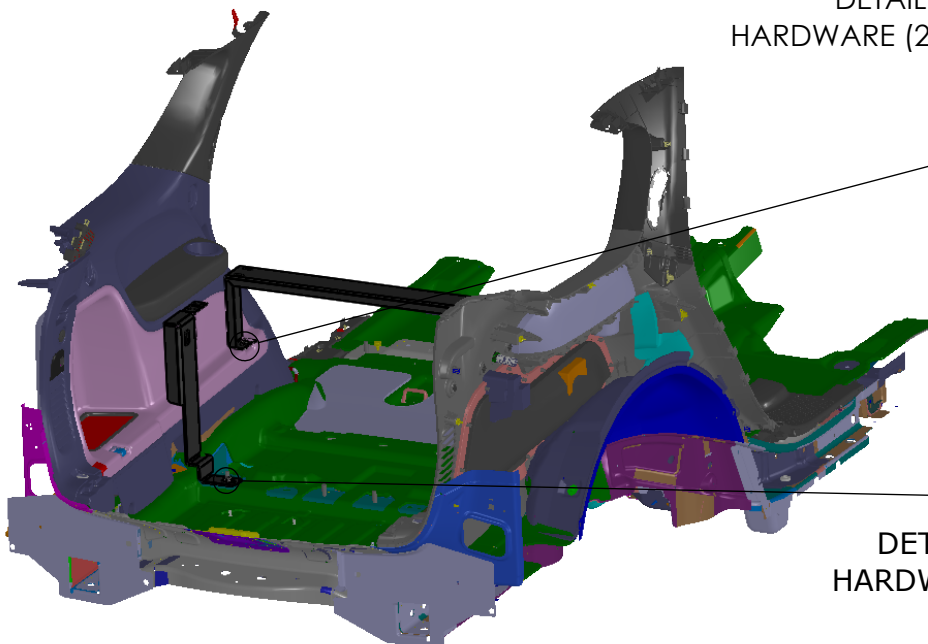
STEP 4:

REMOVE THE BUCKLE FROM BOTH SIDES AS SHOWN. BY REMOVING THE PLASTIC COVER THE SCREW WILL BE EXPOSED.

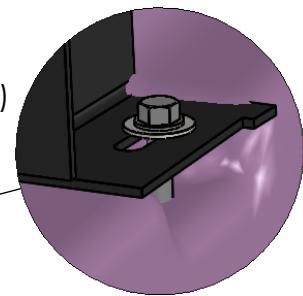


STEP 5:

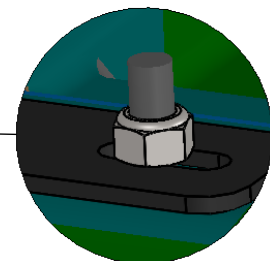
INSTALL THE BRACKETS AS SHOWN USING THE HARDWARE PROVIDED.



DETAIL A
HARDWARE (2) AND (5)

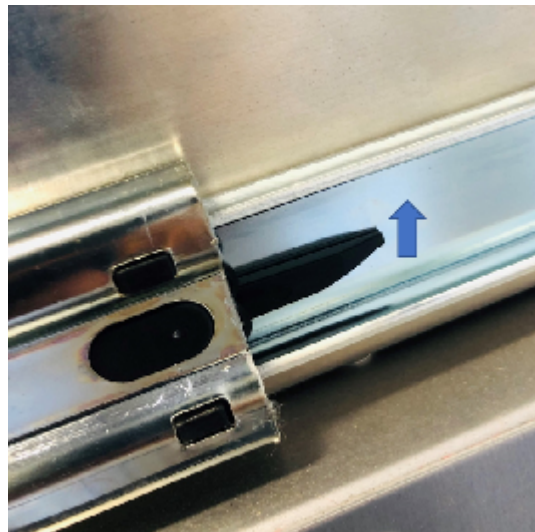
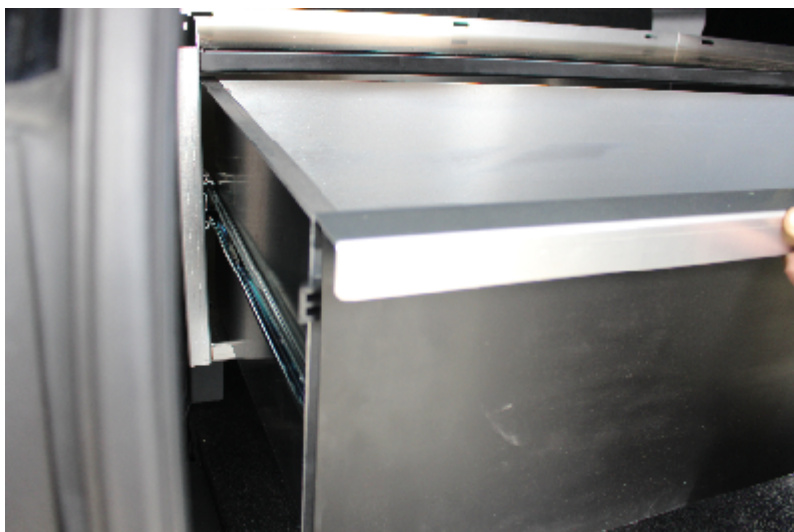


DETAIL B
HARDWARE (1)

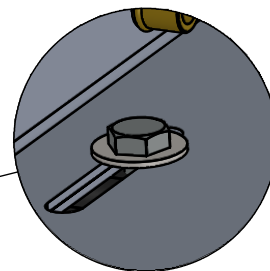
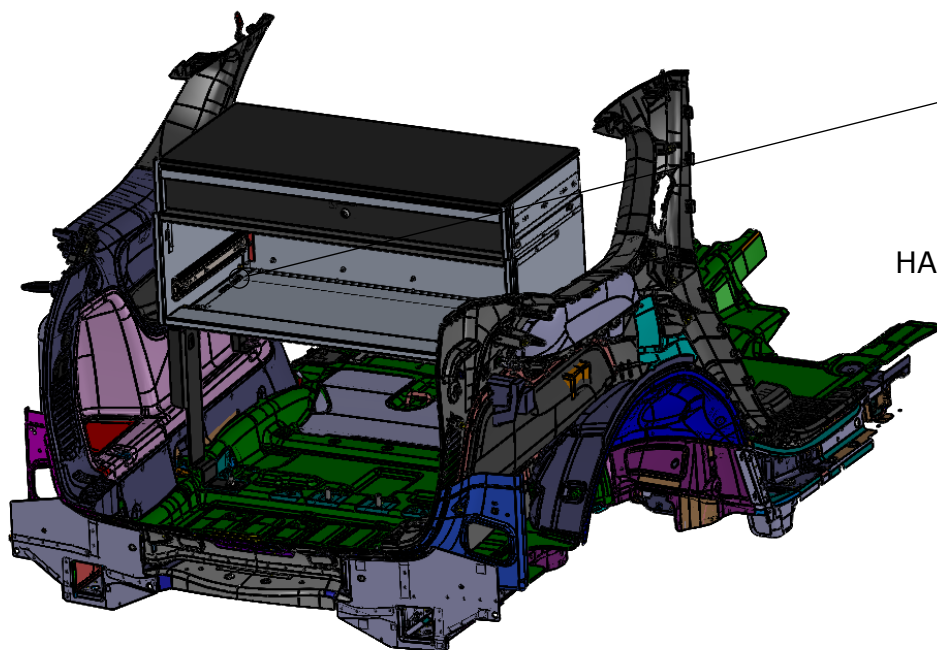


STEP 6:

REMOVE THE BOTTOM DRAWER BY OPENING IT TO FULL EXTENSION AND PUSHING THE PLASTIC TABS LOCATED ON BOTH SIDES OF THE SLIDE WHILE PULLING THE DRAWER STRAIGHT OUT.

**STEP 7:**

ALIGN THE SLOTS OF THE CABINET WITH THE SLOTS OF THE BRACKETS AND FIX THE CABINET USING THE HARDWARE PROVIDED.



DETAIL C
HARDWARE (3), (4) AND 2 X (5)

STEP 8:

PLACE THE DRAWER BACK INTO THE CABINET BY ALIGNING THE SLIDES ON EACH SIDE AND PUSHING THE DRAWER STRAIGHT IN UNTIL FULLY CLOSED.

INSTALLATION IS NOW COMPLETE.

