



# **///CODE 3<sup>®</sup>** **MATRIX<sup>®</sup>**

WE BUILT IT FOR YOU TO OWN IT.





# ///CODE 3 MATRIX®



DOOR CUT - ELIMINATE SIDE LIGHTING

FULL FLOOD - ENGAGE FORWARD WHITE LIGHTS

## PROTECTING THOSE WHO SERVE

Code 3's latest innovation in automation keeps officers focused on the task at hand. Running code, making high-risk stops and ensuring visibility on scene are stressful enough and officers need to make every second count. The last thing they need to worry about is pushing buttons and flipping switches to change tones and flash patterns.

The Matrix system syncs the unit's warning systems and links officers' actions to the functionality of the lights and siren. Do these scenarios sound familiar? Find out how popular Matrix software presets reinforce officer and public safety.

### LIGHTS AND SIREN

**LIGHTBAR** – Activate custom flash-patterns and color combinations. Turn signals, braking and parking can be programmed to trigger pattern and color changes

**SPEED** – Change tones and lighting functions at a pre-determined speed

**HORN RING TRANSFER** – Change tones and lighting functions when the horn is engaged

### TRAFFIC STOP

**DOOR CUT** – Eliminate lighting on the driver- or passenger-side of the vehicle when a door is opened; reduce night blindness from bright lights

**STOP-TAIL-TURN** – Provide directional lighting when turn-signaling. Additionally, stepping on the brake turns all rear-facing lights red

### HIGH-RISK STOP

**FULL FLOOD** – Engage high beams, turn all forward-facing lights white

**PARK KILL** – Put the unit in park, cut the siren tone and flashing lights

### ON-SCENE

**DIRECTIONAL** – Activate directional flash patterns and sync exterior lighting

**DIM** – Reduce LED luminosity allowing citizens to pass more safely.

These presets only scratch the surface of Matrix's capability. The system can be configured to activate a K9 unit's air conditioning if the internal temperature gets too high. Program a cruise light function to signal availability and boost community policing efforts. The possibilities are endless. Make the system work for you and your jurisdiction.



# CODE 3 MATRIX®

CLICK. DRAG. DROP. CUSTOMIZE.

Code 3 designed Matrix to be an intuitive, serial system from installation to configuration.

Hardware components, such as the OBD interface, Switch Node and Splitter with CAT5 connections, make installation a breeze by consolidating wiring and synching emergency warning systems throughout the vehicle.

The software is just as straight forward. With the industry's first click, drag, drop user interface, upfitters and departments can easily program a unit's entire complement of lights and siren. Save the settings to a file, then upload the configurations to the entire fleet.

Seamlessly integrate these Matrix-enabled components into your organization's next build.



## Z3™ SIREN EASY TO OPERATE CONTROL HEAD

200W/300W / Control head 3.3" H x 6.8" L x 1" D / Amplifier 4" H x 9.75" L x 6.8" D

- 18 configurable outputs: 2 – 20A outputs, 8 – 10A outputs, 8 – 500mA outputs
- 13 configurable inputs
- Optional push button or rotary control heads available, both models have a three position slide switch
- Customized patterns available to be programmed for ArrowStik® through Matrix software®
- Built in "battery voltage check" sensor shuts down lights and sirens when voltage runs below a programmed setting
- Available with or without "built-in space saving low frequency amp BANSHEE"



21 SERIES LIGHTBAR - SAE CLASS I LED LIGHTBAR



THIN SUPERVISOR™ - WINDSHIELD MOUNTED INTERIOR LIGHT



27 SERIES LIGHTBAR



21 SERIES LIGHTBAR



**21 SERIES / 27 SERIES LIGHTBAR**

12V / 2.1" H x 12.3" D (21 Series), 2.7" H x 12.3" D (27 Series)  
Unlimited flash patterns / Custom configurations available on Lightbar Builder

**AVAILABLE COLORS:** (21 Series) AG, AR, AW, BW, RB, RW, AWG, BAG, BAW, BWG, RAG, RAW, RBA, RBG, RBW, RWG  
(27 Series) AG, AR, AW, BW, RB, RW, AWG, BAG, BAW, RAG, RAW, RBA, RBW

- DETAILS:**
- ArrowStik™
  - Flashing takedown and alleys
  - Cruise lights (flicker and safety)
  - Dual or tri-color lightheads

- OPTIONS:**
- **LENGTHS AVAILABLE:** 22", 36", 44", 47", 52", 58", 69", 80" & 91"
  - 795H Opticom™ or N-3 Emitter
  - Upper lenses available in red, blue, amber, tinted (21 Series), clear (27 Series), or black (with black lens clips)
  - CAT5 cable for easy install
  - Lower lens available in amber, clear or tinted for specific configurations (21 Series)



**THIN SUPERVISOR™**

12-24V / 6.8A / 87W / 0.8" H X 17.6" W X 4.8" D / UNLIMITED FLASH PATTERNS

**AVAILABLE COLORS:** BA, BW, RB, RW/BW (DRIVER SIDE/PASSENGER SIDE), BAW, RAW, RBA, RBW

- DETAILS:**
- Universal housing
  - Dual or Tri color lightheads
  - Minimal flashback
  - No drilling required for mounting
  - contoured for installation against the upper interior of the windshield
  - Low profile unit allows for unobstructed view and for the sun visor to fold forward
  - Cable length between the drive and passenger side is 18"
  - Sync Supervisor flash patterns with the rest of the lighting on this vehicle





THIN WINGMAN™ - PERFECT PARTNER TO THE SUPERVISOR™



CITADEL™ SERIES - EXTERIOR LIGHTING SYSTEM



**THIN WINGMAN™**  
12-24V / 6.8A / 87W / 0.9" H x 33.0" W x 6.2" D / Unlimited Flash Patterns

**AVAILABLE COLORS:** AW, BA, RB, RW/BW (DRIVER SIDE/PASSENGER SIDE) BAW, RAW, RBA, RBW

- DETAILS:**
- Dual or tri-color lightheads
  - Minimal flashback
  - No drilling required for mounting, contoured for installation against the rear interior windshield
  - Compact size is ideal for covert applications
  - Sync Wingman flash patterns with the rest of the lighting on the vehicle



**CITADEL™**  
12-24V / Unlimited Flash Patterns

**AVAILABLE COLORS:** A, B, R, BW, RB, AA, BB, RR, AW, BA, BW, RA, RB, RW, RABA, RA/BA, RW/BW, RAW/BAW, BAW, RAW, RBA, RBW

- DETAILS:**
- Dual or tri-color lightheads
  - Enhances rear vehicle visibility while providing the driver maximum rear window viewing and eliminating flash back
  - Citadel designed with six lightheads
  - Sync Citadel flash patterns with the rest of the lighting on the vehicle





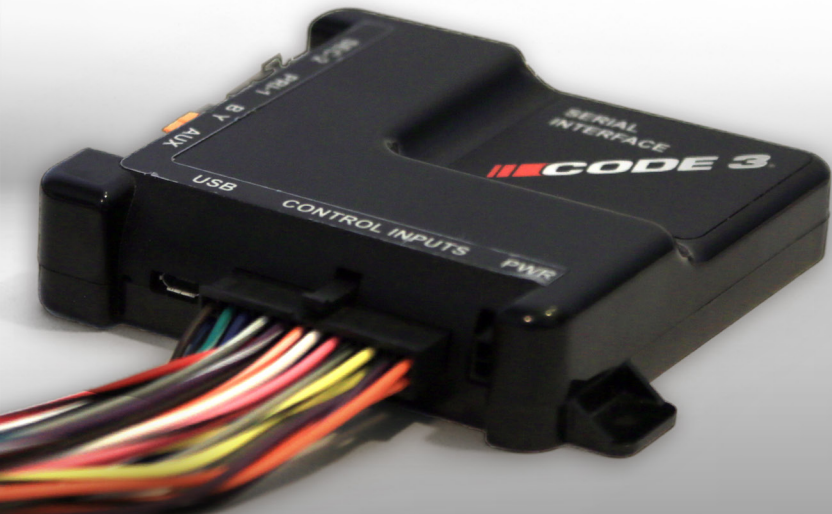
**SWITCH NODE**  
**MORE OUTPUT CONTROL**  
12-24V, 60A / 1.2" H x 6.0" L x 2.5" D  
16 Outputs, 5A per output

- Designed for extreme temperature environments
- Indicator lights for every output
- Outputs can be combined to handle higher power devices
- Dimmable outputs
- Easy install - two-wire connection to Z3 or SIB



**SPLITTER**  
**ENABLES 3+ MATRIX END NODES**  
10-32V / 1.0" H x 4.2" L x 2.1" D  
(2) CAT5 input ports, (4) CAT5 output ports

- Expand the total number of supported Matrix end nodes in a system (Citadel, SuperVisor, WingMan, Lightbars)



**SERIAL INTERFACE BOX (SIB)**  
**PROVIDES MATRIX DEVICE CONNECTIVITY TO LEGACY SIRENS, OE SWITCHING**  
10-32V / 3.7" H x 4.0" L x 1" D  
23 configurable inputs, 2 CAT5 ports

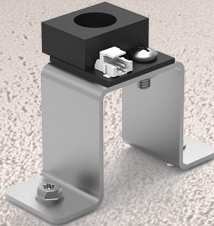
- Central node in the Matrix environment (not needed if a Matrix siren is used)
- USB interface for PC connectivity
- Internal, resettable PTC fuse



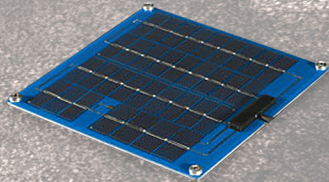
**OBD2 MODULE**  
**REACT AUTOMATICALLY TO VEHICLE SIGNALS**  
12V, 0.0A / 0.7" H x 2.7" L x 1.7" D

- React automatically to vehicle signals (i.e. brake, high beams, turn signals, etc)
- Removes need to splice or cut into the vehicle's OEM wires
- Provides seamless cable connectivity to Vehicle CAN Bus system to interface vehicle signals to Matrix siren system

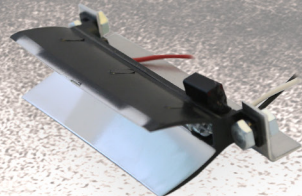
**LIGHTBAR ACCESSORIES**



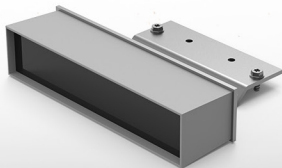
**PHOTOCELLS:**  
**CZ21PC:** 21 Series Matrix  
**CZ27PC:** 27 Series Matrix



**SOLAR PANELS:**  
**S1397M:** 21 Series Matrix  
27 Series Matrix



**N-3 STROBE EMITTER**  
**NPE1000**



**LED INFRARED EMITTER**  
**E795LP-LX**

**UPFIT WITH CONFIDENCE WHEN SELECTING EMERGENCY WARNING SYSTEMS AND DEVICES.**

Matrix-Enabled products are designed to plug-and-play into the Matrix software environment. Enabled devices can fully integrate with each other, providing seamless synchronization and endless customization

**Examples:** Matrix Z3 Siren, Serial Interface Box (SIB), Matrix 21/27 Series lightbars, Switch Node, Matrix Thin SuperVisor, Matrix Thin WingMan

Matrix-Compatible products are not designed with embedded Matrix technology but they can be controlled by Matrix's programming and infrastructure. Synchronization, dimming functions and other enhanced capabilities are possible

**Examples:** directional and exterior lighting such as the M180™ and MICROPAK Hide-A-Blast Series





**///CODE 3.**

**CONNECT WITH US**



**CODE3ESG.COM**

10986 North Warson Road, St. Louis, MO 63114  
(314) 426-2700 / C3\_orders@code3esg.com  
(314) 996-2800 / C3\_tech\_support@code3esg.com

