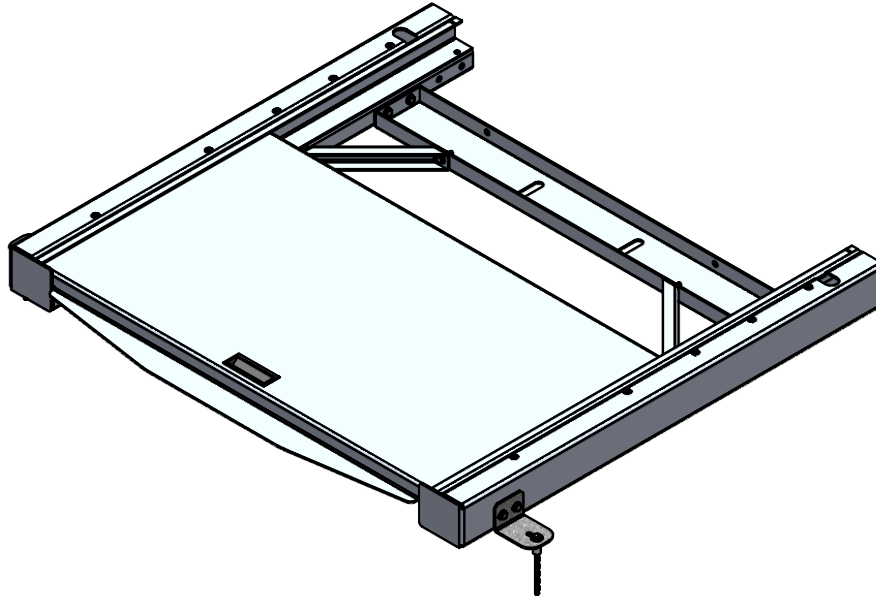
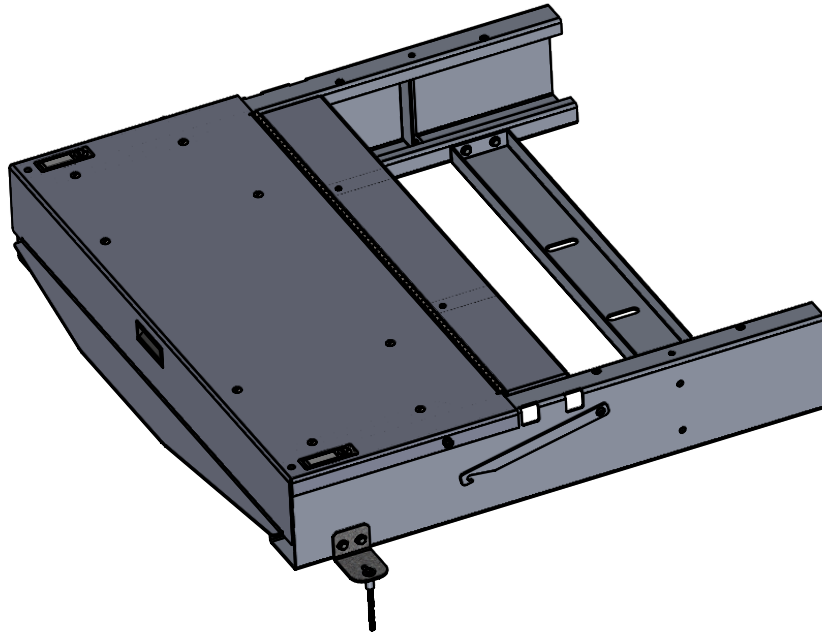


INSTALL INSTRUCTIONS FOR UNITS USING FI-2020 AND FI-2020-101 BASES



FI-2020

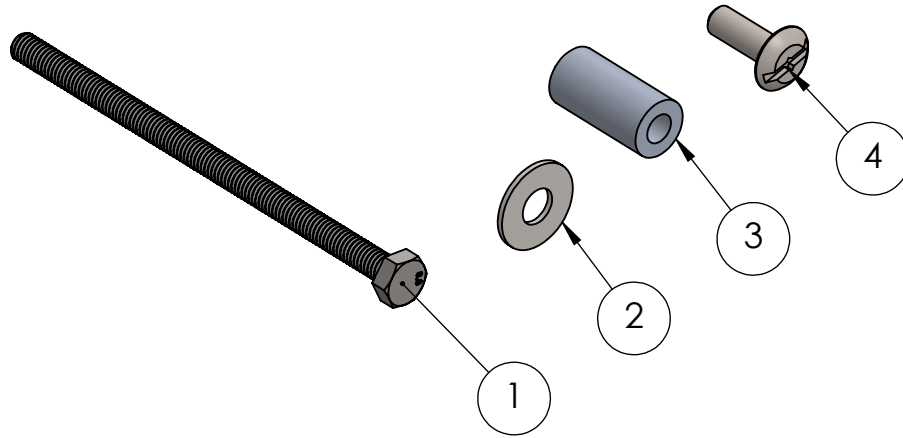


FI-2020-101

NOTE:

THE INSTALL INSTRUCTIONS ARE SAME FOR BOTH FI-2020 AND FI-2020-101 BASES.
FI-2020-101 BASE IS ILLUSTRATED IN THIS DOCUMENT.

HARDWARE REQUIRED



ITEM NO.	PART NUMBER	DESCRIPTION	QTY.
1	1393181	SCREW, HEX HEAD, M6-1MM, 110MM L, ZINC,	2
2	1089578	WASHER, FLAT, 1/4" DIA, 3/4" OD, ZN PLATED STEEL	2
3	1393182	SPACER, ROUND, UNTHREADED, 1/2" OD, 1" L, FOR 1/4 " SCREW SIZE, NYLON	2
4	1281878	SCREW, MACHINE, TRUSS HEAD, 1/4-20, 3/4 LONG, ZINC PLATED, SLOT COMBINATION	4

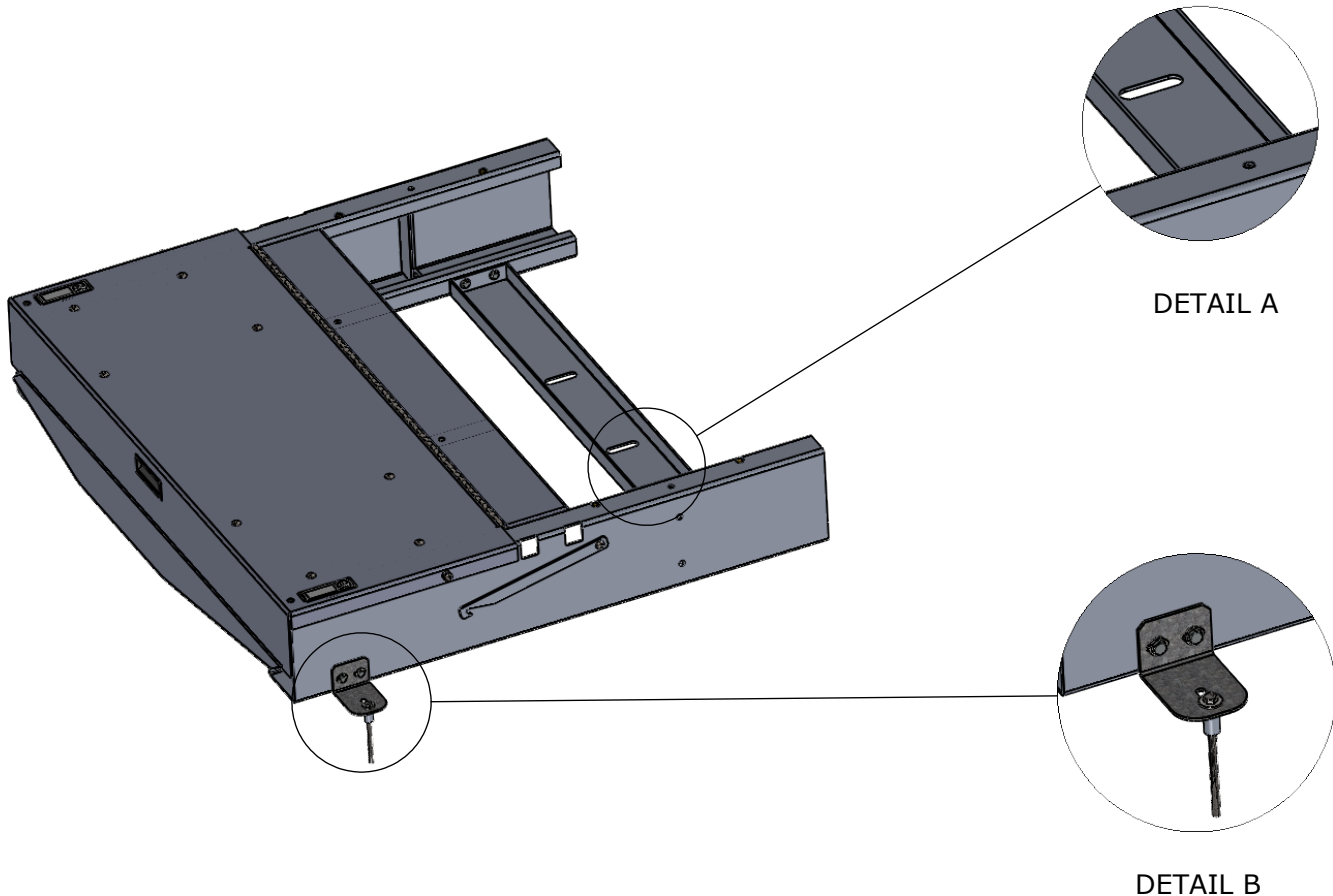
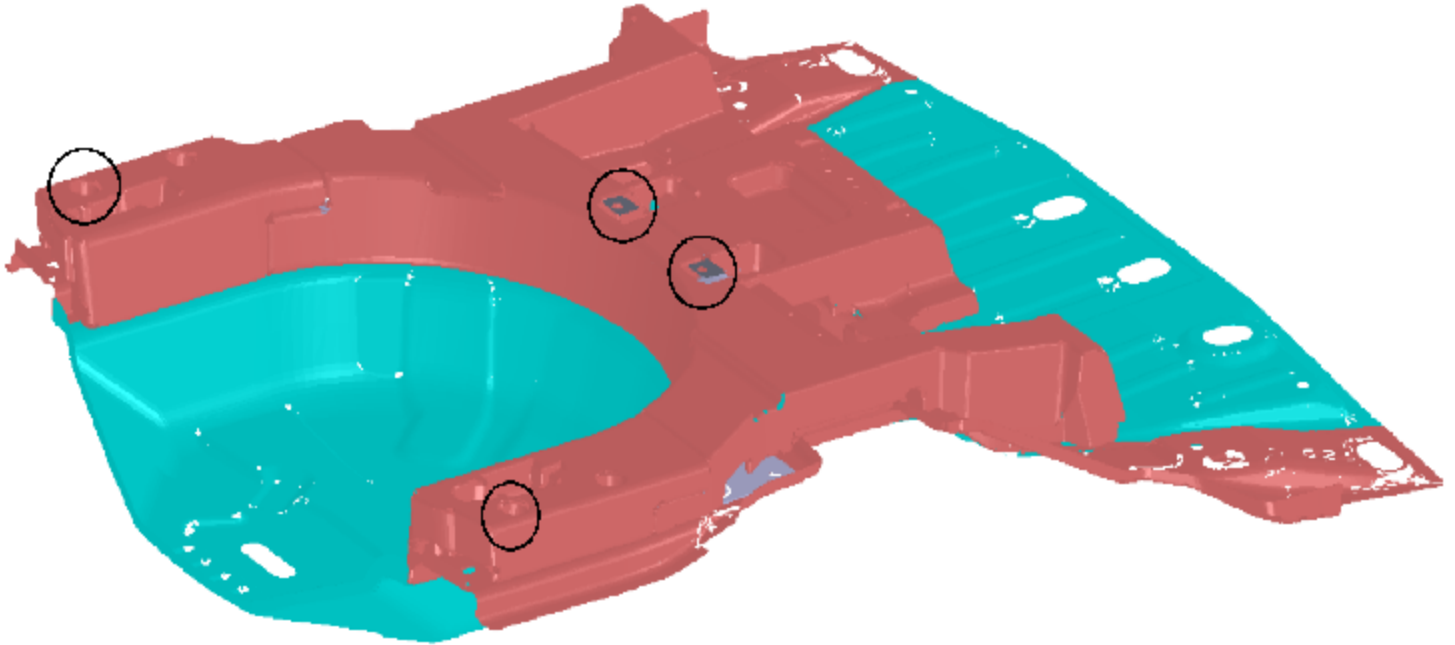


STEP 1:
REMOVE BOTH THE
SECTIONS OF OEM
TRUNK FLOOR BY
REMOVING THE BOLTS
AS SHOWN.



STEP 2:

ALIGN THE BASE WITH THE HOLES FROM WHICH THE BOLTS WERE REMOVED IN STEP 1 AND WITH THE SIDE HOLES AS SHOWN.



STEP 3:

USE THE OEM BOLTS FOR DETAIL-A AND FOR DETAIL-B REMOVE THE OEM BOLT AND USE THE HARDWARE PROVIDED (1,2 AND 3).



DETAIL-A

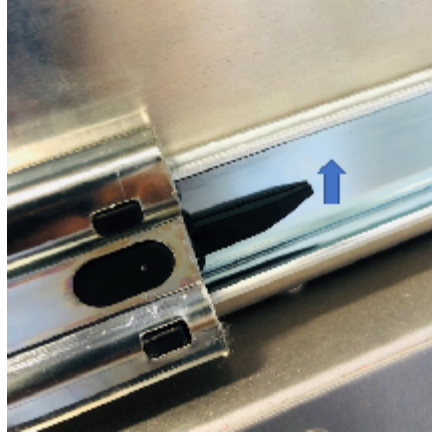
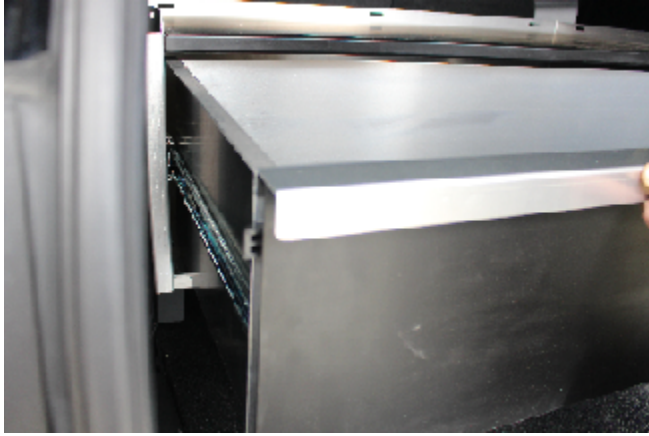


DETAIL-B

ONCE THE BASE IS FIXED, THE CABINET HAS TO BE SECURED TO THE BASE.

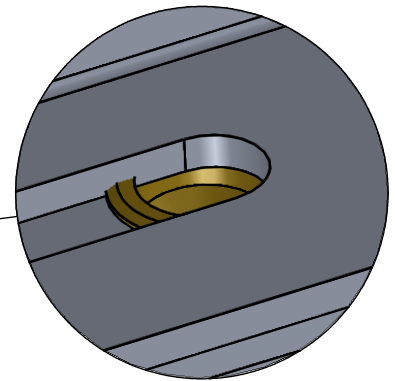
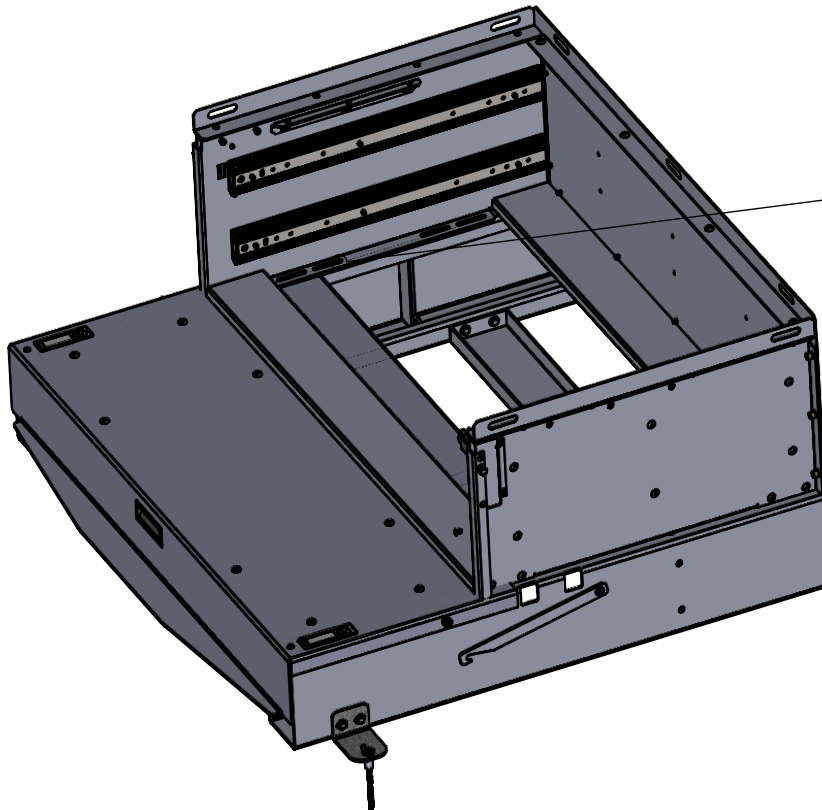
STEP 4:

REMOVE THE BOTTOM DRAWER BY OPENING IT TO FULL EXTENSION AND PUSHING THE PLASTIC TABS IN OPPOSITE DIRECTIONS LOCATED ON SLIDES ON BOTH SIDES OF THE DRAWER WHILE PULLING THE DRAWER STRAIGHT OUT.

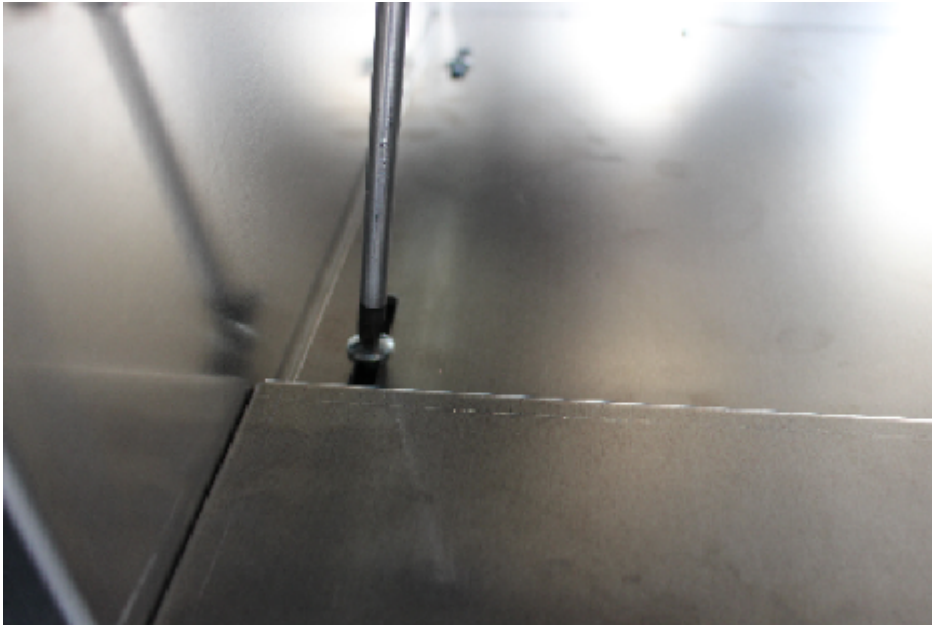


STEP 5:

PLACE THE CABINET ON THE BASE AND ALIGN THE SLOTS OF THE CABINET WITH THE HOLES OF THE RIV NUT ON THE BASE ON ALL THE FOUR CORNERS.



DETAIL H
SCALE 2 : 1



STEP 6:
FASTEN THE CABINET TO THE
BASE USING THE HARDWARE
PROVIDED (4).

STEP 7:
PLACE THE DRAWER INTO
CABINET BY ALIGNING THE
SLIDES ON EACH SIDE AND
PUSHING THE DRAWER STRAIGHT
IN UNTIL FULLY CLOSED. DO NOT
FORCE.

THE INSTALLATION IS NOW
COMPLETE.

NOTE: LOCKING LEVERS ARE PROVIDED ON BOTH
SIDES TO HOLD THE FLIP COVER IN PLACE WHILE
ACCESSING THE SPARE TIRE.

